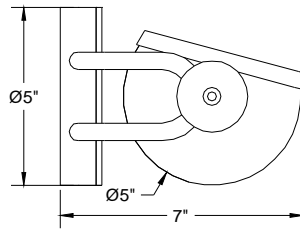
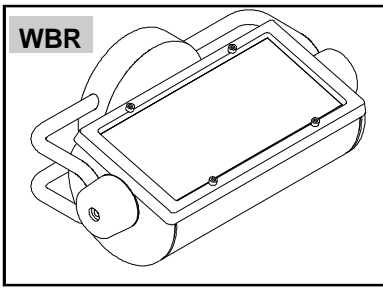


**OUTDOOR  
ARCHITECTURAL  
LUMINAIRES**

# ARIDA WT500 SERIES

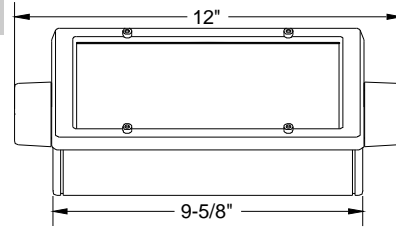
Wall Bracket

Quartz Halogen/Ceramic Metal Halide/  
Metal Halide / Compact Fluorescent

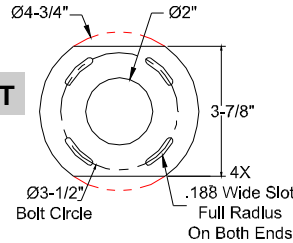


**DIMENSIONS**

Adjustable +/- 180°  
Rotatable 358°



**MOUNTING BRACKET**



Mounted directly to  
standard J-Box by  
others.

**ORDERING**

PREFIX	MOUNTING TYPE	VOLTAGE	FINISH	OPTIONS
<b>Quartz Halogen</b> (100-350W Available in 120V) <b>WT500</b> (1)-Q250 Max. (T4, Mini-Can) <b>WT510</b> (1)-Q350 Max. (T3 RSC)	<b>WBR</b>  Wall Bracket	1. 120V	<b>TW</b> Textured White	<b>WVS</b> Solid cutoff visor <b>WBF</b> Internal baffle <b>WCVG</b> Colored tempered glass filter in visor frame <b>WCVD</b> Colored dichroic glass filter in visor frame <b>WLV</b> External louvered visor <b>WLB</b> Wet location remote ballast <b>DLB</b> Damp location remote ballast is standard. <b>EB</b> Electronic CMH ballast 120V and 277V only.
<b>Metal Halide</b> <b>WT523</b> (1)-100W MH (T6, G12)		2. 277V	<b>TBL</b> Textured Black <b>TBR</b> Textured Bronze <b>TN</b> Textured Natural <b>TS</b> Textured Sandstone <b>TV</b> Textured Verdi	
<b>Ceramic Metal Halide</b> <b>WT517</b> (1)-39W CMH (T6, G12) <b>WT522</b> (1)-70W CMH (T6, G12) <b>WT527</b> (1)-150W CMH (T6, G12)	Fluorescent Ballast are integral	3. 208V	<b>SF</b> Specify Finish (See Color Chart)	
<b>Compact Fluorescent</b> * (120V & 277V only) <b>WT572</b> (1)-F26W DTT (PLT, GX24q-4)		4. 240V	<b>CC</b> Custom Color (Contact Factory)	
		7. 347V		

Ordering Example: WT 517 / WBR / 1 / TW / WLB \* Fluorescent only available in 120V, 277V, & 347V \*\* Contact Factory for Color Selection

**SPECIFICATIONS**

**Housing:** Sealed, high grade extruded aluminum with die-cast aluminum end plates welded in place. Flush stainless steel socket cap bolts allow easy aiming adjustment.

**Lens:** Single piece cast aluminum doorframe held in place by four retained stainless steel socket head screws. Lens is tempered micro-prismatic glass. Lens is sealed to housing with a single piece molded rubber gasket.

**Reflector:** Die-formed, 95% reflective, peened, specular, anodized aluminum that provides clean, even distribution with no streaks or striations.

**Finish:** All surfaces are pretreated in a phosphate wash, finished to 3 mil. thickness with TGIC powder paint with ultraviolet inhibitors.

**Electrical:** Damp location Ceramic Metal Halide and Metal Halide ballasts standard for remote mounting are encapsulated, thermally protected, high power factor, F-Can type ballasts. Optional wet location Ceramic Metal Halide and Metal Halide ballasts for remote mounting core / coil, high power factor type ballasts mounted in a NEMA 3R wet location enclosure. Fluorescent ballasts are electronic, high power factor, less than 10%THD, thermally protected and integral to the fixture.

**Labels:** Luminaires are UL and CUL approved for Wet locations in all mounting positions.



PREFIX	MOUNTING TYPE	VOLTAGE	FINISH	OPTIONS
WT5___	WBR			

APPROVED: \_\_\_\_\_

JOB NAME: \_\_\_\_\_

TYPE: \_\_\_\_\_

Insight Lighting reserves the right to change specifications without notice due to product improvements.

**INSIGHT**

Rio Rancho, NM 87144  
TEL: 505 345-0888  
www.insightlighting.com

WT500-WBR 04-2008