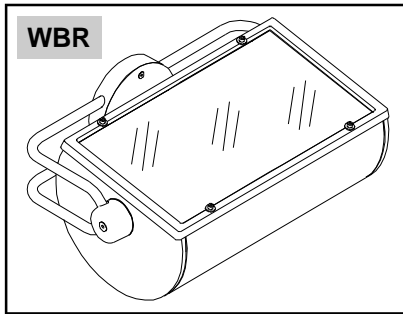


**OUTDOOR
ARCHITECTURAL
LUMINAIRES**

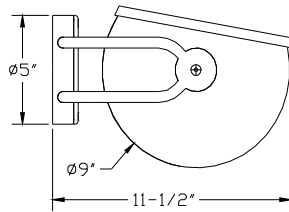
ARIDA WT900 SERIES

Wall Bracket
Remote Ballast

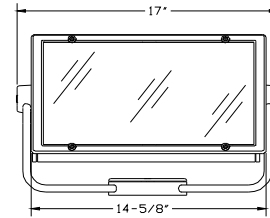
Quartz Halogen / Compact Fluorescent
Metal Halide / High Pressure Sodium



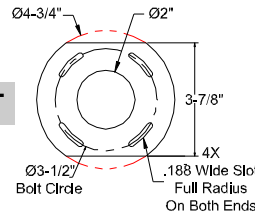
DIMENSIONS



Adjustable +/- 180°
Rotatable 358°



MOUNTING BRACKET



Mounted directly to
standard J-Box by
others.

ORDERING

PREFIX	MOUNTING TYPE	VOLTAGE	FINISH	OPTIONS
Quartz Halogen WT910 (1)-Q900W -Q1000W (RSC, 10-1/16" MOL) 900W Available in 240 & 277V; 1000W Available in 120 & 240V	WBR Wall Bracket	1. 120V 2. 277V 3. 208V	TW Textured White TBL Textured Black TBR Textured Bronze TN Textured Natural TS Textured Sandstone TV Textured Verdi	WVS Solid cutoff visor WBF Internal baffle WCVG Colored tempered glass filter in visor frame WCVD Colored dichroic glass filter in visor frame
Metal Halide WT920 (1)-100W MH (E17, Med.) WT921 (1)-150/175W MH (E17, Med.) WT922 (1)-250W MH (T15, ET18, POMB) WT923 (1)-400W MH (T15, ET18, POMB)	Remote Ballast	4. 240V 7. 347V	SF Specify Finish (See Color Chart) CC Custom Color (Contact Factory)	WLV External louvered visor WLB Wet location remote ballast PS Pulse Start adder (Specify Wattage, Consult Factory)
High Pressure Sodium WT931 (1)-150W HPS (E17, Med.) WT932 (1)-250W HPS (E18, POMB) WT933 (1)-400W HPS (E18, POMB)	Fluorescent Ballasts are integral			
Compact Fluorescent WT972 (2)-F32W TT (PLT, GX24q-4) WT974 (1)-F42W TT (PLT, GX24q-4)				

Ordering Example: WT 910 / WBR / 1 / TW / WVS * Fluorescent only available in 120V, 277V, & 347V ** Contact Factory for Color Selection

SPECIFICATIONS

Housing: Sealed, high grade extruded aluminum with die-cast aluminum end plates welded in place. Flush stainless steel socket cap bolts allow for easy aiming adjustment.

Lens: Single piece cast aluminum doorframe held in place by four retained stainless steel socket head screws. Lens is tempered micro-prismatic glass. Lens is sealed to housing with a single piece molded rubber gasket.

Reflector: Die-formed, 95% reflective, peened, specular, anodized aluminum that provides clean, even distribution with no streaks or striations.

Finish: All surfaces are pretreated in a phosphate wash, finished to 3 mil. thickness with TGIC powder paint with ultraviolet inhibitors.

Electrical: Damp location High Pressure Sodium and Metal Halide ballasts standard for remote mounting are encapsulated, thermally protected, high power factor, F-Can type ballasts. Optional Wet location High Pressure Sodium and Metal Halide ballasts for remote mounting core/coil, high power factor type ballasts mounted in a NEMA 3R Wet location enclosure. Fluorescent ballasts are electronic, high power factor, less than 10%THD, thermally protected and integral to the fixture.

Labels: Luminaires are UL and CUL approved for Wet locations in all mounting positions.



PREFIX	MOUNTING TYPE	VOLTAGE	FINISH	OPTIONS
WT9___	WBR			

APPROVED: _____

JOB NAME: _____

TYPE: _____

Insight Lighting reserves the right to change specifications without notice due to product improvements.

INSIGHT

Rio Rancho, NM 87144
TEL: 505 345-0888
www.insightlighting.com

WT900-WBR

05-2008