

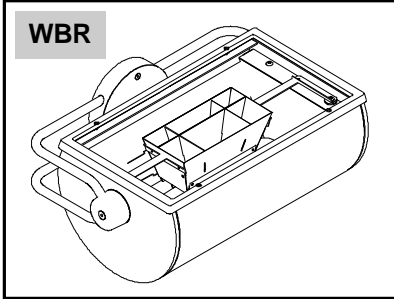
**OUTDOOR
ARCHITECTURAL
LUMINAIRES**

Wall Bracket
Remote Ballast

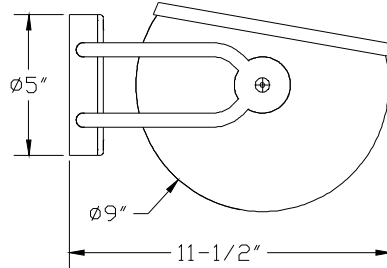
ARIDA DWW SERIES

Metal Halide/High Pressure Sodium

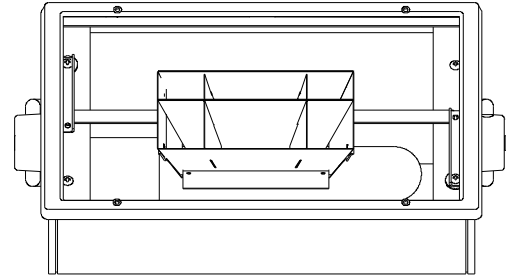
WBR



DIMENSIONS



MOUNTING BRACKET



ORDERING

PREFIX	MOUNTING TYPE	VOLTAGE	FINISH	OPTIONS
Metal Halide WT925 (1)-100W MH (E17, Med.) WT926 (1)-150/175W MH (E17, Med.) WT927 (1)-250W MH (T15, ET18, POMB) WT928 (1)-400W MH (T15, ET18, POMB)	WBR Wall Bracket Remote Ballast	1. 120V 2. 277V 3. 208V	TW Textured White TBL Textured Black TBR Textured Bronze TN Textured Natural TS Textured Sandstone TV Textured Verdi SF Specify Finish CC Custom Color (Contact Factory)	WCVG Visored colored tempered glass lens** WCVD Visored dichroic glass lens** WQL Restrike Hot/Cold Type 100W Max. WQEM Quartz Socket For Em. Circuit (100W Max.) WLB Wet Location Remote Ballast
High Pressure Sodium WT935 (1)-150W HPS (E17, Med.) WT936 (1)-250W HPS (E18, POMB) WT937 (1)-400W HPS (E18, POMB)				
Ordering Example: WT 925 / WBR / 1 / TW				**Contact Factory for Color Selection

SPECIFICATIONS

Housing: Sealed, high grade extruded aluminum with die-cast aluminum end plates, secured by flush, stainless steel socket cap screws allowing for ease of adjustment.

Lens: Single piece cast aluminum frame held in place by four retained stainless steel socket head screws. Lens is tempered micro-prismatic glass. Lens is sealed to housing with a single piece molded rubber gasket.

Reflector: Computer designed die-formed from 95% reflective specular peened and specular clear anodized aluminum. A multi-sectional lower and functional louvered upper reflectors direct normally wasted light on to the target while achieving an exact rear cutoff.

Finish: All surfaces are pretreated in a phosphate wash, finished to 3 mil. thickness with TGIC powder paint with ultraviolet inhibitors.

Electrical: Encapsulated, thermally protected high profile factor F-can ballasts are standard rated for Damp locations. Optional remote core / coil high power factor ballasts mounted in NEMA 3R enclosures are available for Wet Locations.

Labels: Luminaires are UL and CUL approved for Wet locations in all mounting positions.



PREFIX	MOUNTING TYPE	VOLTAGE	FINISH	OPTIONS
WT9____	WBR	2	TBL	WLB

APPROVED: _____

JOB NAME: _____

TYPE: _____

Insight Lighting reserves the right to change specifications without notice due to product improvements.

INSIGHT

Rio Rancho, NM 87144
TEL: 505 345-0888
www.insightlighting.com

DWW-WBR 04-2008

